

omega
altise

AVA PEARLE Air Cooler



**Instruction
Manual**

Important Safety Instructions

1. Read all instructions.
2. Disconnect the power plug before dismantling, assembling or before cleaning.
3. Avoid touching mobile parts of the fan.
4. Make sure the unit is on a dry and even surface.
5. Never insert fingers, pencils or any other objects through the guards whenever the power plug is connected, especially while running.
6. The appliance is not intended for use by persons (including children) with reduced physical, sensory or mental capabilities, or lack of experience and knowledge, unless they have been given supervised or instruction concerning use of the appliance by a responsible person for their safety.
7. Young children or infirm persons should be supervised to ensure that they do not play with the appliance.
8. Do not use the appliance for any other purpose than its intended use.
9. The fan must not be used if the guards are not fastened according to instructions.
10. When the power cord is damaged, it must be replaced by the manufacturer or its service agent or a similarly qualified person in order to avoid a hazard.
11. Do not use your appliance with an extension cord unless it has been checked and tested by a qualified electrician or electrical supplier.

Read all instructions before using this unit. Keep them for future reference.

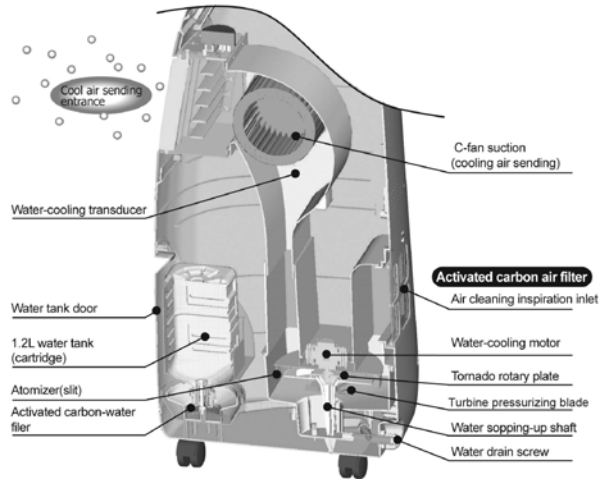
Specifications

Model	AVA PEARLE
Rated Voltage	220-240V / 50Hz
Power consumption	55W
Maximum wind power	25m ³ /min50Hz 28m ³ /min60Hz
Dimensions (h x w x d) mm	810 x 350 x 350
Weight (net) kg	7.5

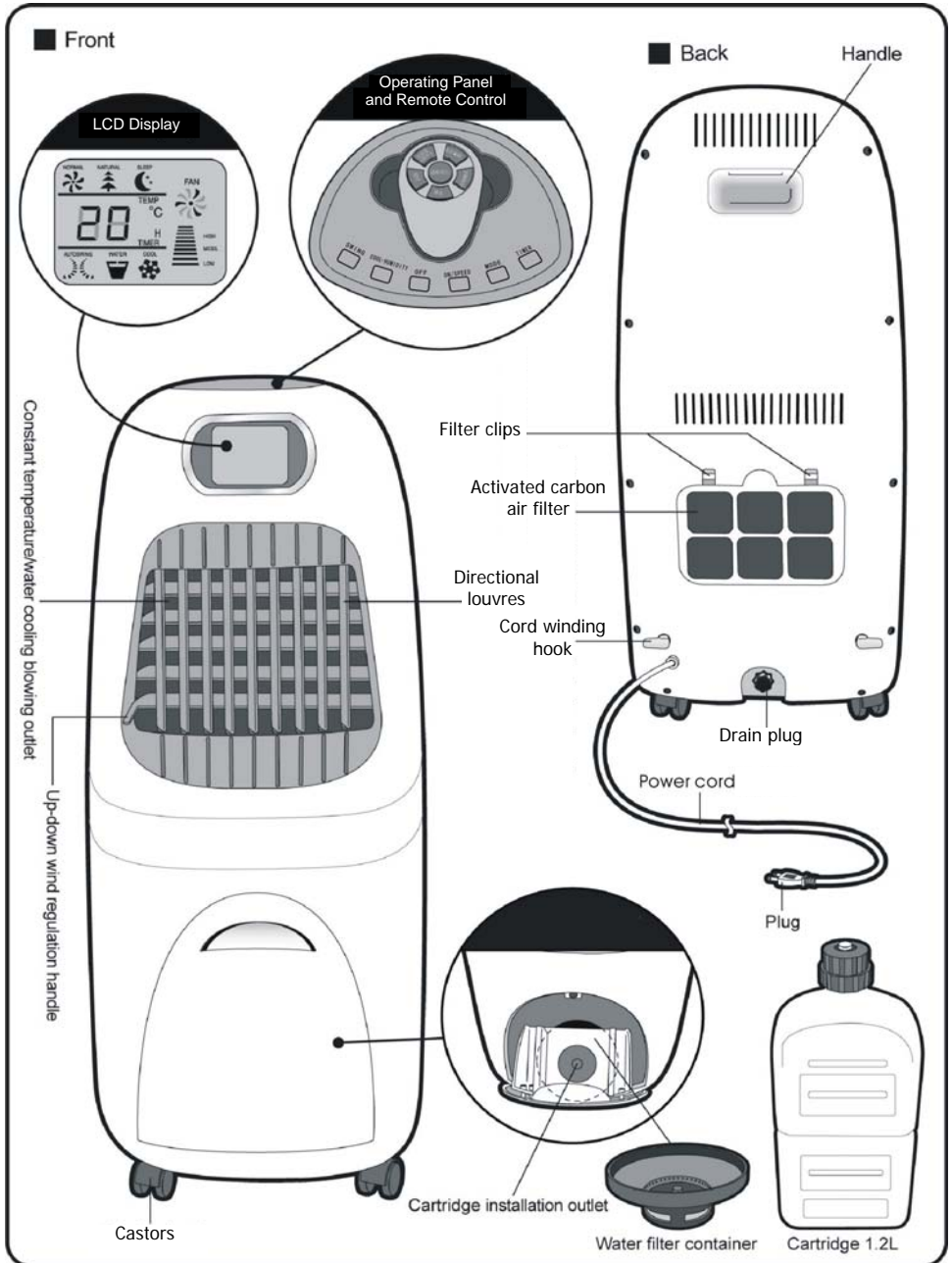
Water tank capacity	1.2L
Settings	3 speed, Normal, Natural and Sleep modes
Controls	Electronic / Remote
Oscillation	Yes
Timer	Timer off: 0.5hr – 9.5hr
Warranty	2 years

INTRODUCTION TO YOUR NEW AIR COOLER







- This air cooling unit contains the latest “**Cyclonic Water Vaporisation**” technology and is a new patented design.
- Our Unique Patented Cyclonic Water Vaporization System uses an atomization motor which breaks up the large water molecules into a fine cooling mist. This absorbs the heat from air to send cooler air to you.
- It can improve cooling efficiency with a low power consumption of **only 55W**. Less than your average light bulb!
- Double activated carbon filters nearby the air inlet ensures the outgoing air is fresh and clean.
- The easy fill 1.2L water bottle stores enough water to continuously deliver cooler air for 8 hours
- Feed nozzle controls the correct amount of water automatically, therefore you don’t need to continually refill it or worry about the build up of germs or micro-organism. This enclosed system prevents bacteria build up.
- Hygienic enclosed water system helps prevent bacteria build up and periodic cleaning is simple by adding a small amount of peroxide to the water bottle or using an anti-bacterial detergent.
- A few drops of Eucalyptus or essential oils may be added to the water to add to the ambiance or aid breathing. Wonderful for Asthmatics and those with breathing difficulties.
- No tanks to drain or clean out simply use the supplied water bottle.
- No venting is required, unlike portable air conditioning units.



Parts List

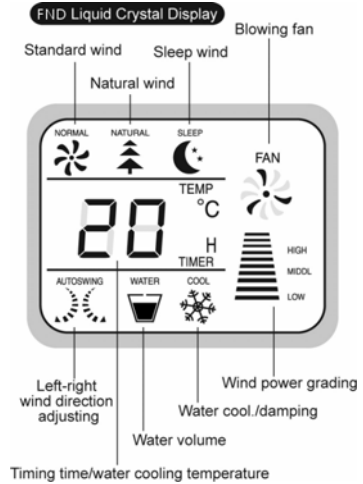
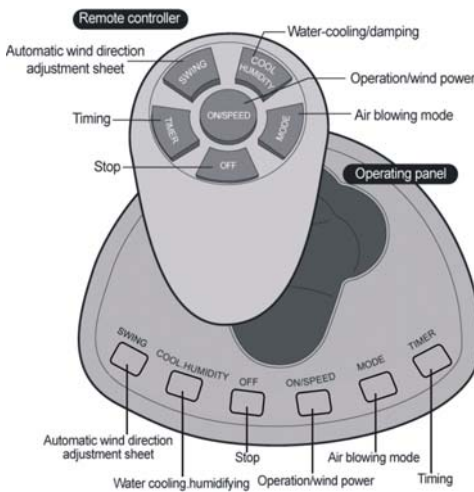


CAUTION!

<p>Please keep ventilated.</p> <p>The greatest cooling effect will be felt if the unit is operated in a partly opened doorway or window to create the 'flow through' effect.</p> 	<p>Please keep electrical appliances and furniture away from the direct path of the air outlet.</p> <p>Not doing so may cause water to condensate on the item.</p> 	<p>Do not move the unit when the water is full.</p> <p>Moving the machine when the water is full may cause water leakage.</p> 
<p>Do not place items on top of the unit.</p> 	<p>Place on a stable surface.</p> <p>If the machine is unstable or overturned the unit may vibrate or the water in the tank may leak.</p> 	<p>Do not damage, twist or bind the power supply cord when the unit is in use.</p> 

- This unit is designed to remove dirt and other atmospheric impurities by drawing in air through the air filter. Do not block the air filter, as this will impair the efficiency of the machine.
- Pushing the unit up against a wall or operating it in very close proximity to long window drapes will also impair the unit's airflow and efficiency.
- Check the drainage cover is tightened sufficiently.
- For extra cooling power, refrigerate or freeze the water bottle.

How Operate



Please note that after you plug the unit into the power outlet and turn the power supply on the unit will emit one beep, all patterns on the LCD Display will be illuminated and the unit will be in standby mode.



ON / SPEED:

- To turn the unit on, press the ON/SPEED button.
- The unit will automatically start in Normal wind / Low speed position.
- Each time the button is pressed, the speed increases from low to medium, and then to high. The 'wind power grading' indicator on the display will illuminate according to the increase or decrease in speed.

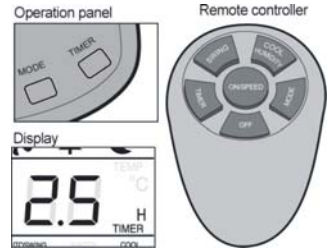
MODE:

- Press the mode button to select Normal, Natural or Sleep fan mode. The icon illuminated on the display will change accordingly (as shown in the above).
- The air speed can be use in conjunction with each mode.
- When Natural or Sleep airflows are selected the fan will continually cycle through Low, Middle and High fan settings and can be used in conjunction with the fan speeds.



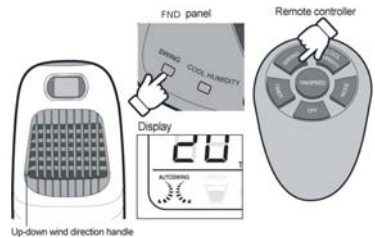
TIMER-OFF:

- The time can be set between 0.5hrs and 9.5hrs.
- Each time the button is pressed, the time increases by 0.5hrs.
- Once set, the display will alternate between the timer-off setting and the water cooling temperature.
- The unit will automatically turn off when the set time expires.
- To switch this function off, keep pressing the button until 0 time is displayed.



AUTOSWING (AIRFLOW):

- Swing gives you the choice of having either a fixed position or continuously sweeping airflow.
- For continuously sweeping airflow, press the SWING button. The vertical louvres will oscillate about 70° from left to right. Press again to stop oscillation.
- The horizontal louvres can be adjusted manual by using the tab at the bottom left of the air outlet area.

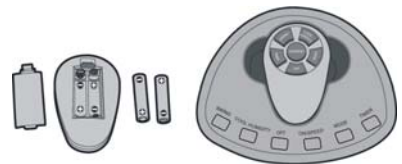


OFF:

- Press the off button to turn the unit to stand-by mode.
- It is recommended to unplug the unit from the power supply when not in use.

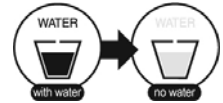
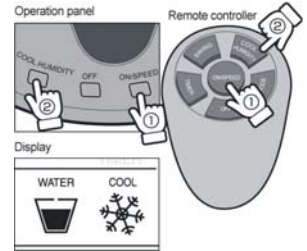
REMOTE CONTROL:

- This unit comes with a full function remote control.
- The remote requires 2 x AAA batteries.
- The effective range is approximately 6m.



COOL/HUMIDITY:

-
- Fill the water bottle and place it into the assembly entrance (see Water Supply and Drainage section).
- To start the air cooling function of the unit, press the COOL/HUMIDITY button and the Cyclonic Water Vaporization process will begin. Both the water and snowflake icon will become illuminated.
- When the water bottle becomes empty, the unit will display will change and the electronic buzzer will give off a 10 second warning alarm. The unit will then automatically stop the cooling mode and switch into normal fan operation.



Water consumption volume and standard use time

Item/ capacity	Average water usage (per hour)	Standard time for 1.2L water usage (continuous utilization)
Low fan speed	Approx 130ml	Approx 8 hours
Middle fan speed	Approx 150ml	Approx 7 hours
High fan speed	Approx 180ml	Approx 6 hours

PLEASE NOTE: Water consumption volume will quite differ from standard value according to surrounding temperature, humid temperature and water temperature. Therefore, the above values are standard value.

TIP: The colder the water you use in the water bottle during COOL mode the greater the cooling effect. Try storing the water bottle in the fridge or freezer.

Water Supply and Drainage

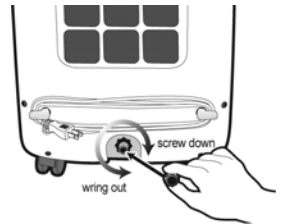
WATER BOTTLE

- On initial use the water bottle will be held in place by a piece of protective tape. Remove the tape and discard.
- Remove the water bottle from the water tank installation outlet. Twist and remove the lid, fill with water and secure the lid back onto the bottle. Do not over tighten.
- After inserting the water bottle into the installation outlet and close the door, the unit should give off a sound. If there is no sound, check if the water bottle is inserted correctly.



DRAINAGE

- When finished using the unit, turn the unit off and remove any residual water.
- Open the drainage bolts on the back of the machine. Over a drain hole or water tray incline the machine forward and backward to ensure all water is removed from the unit.
- Do not keep the water in the water tank over three days as the water and the filters may become moldy.
- Do not let the machine incline when moving the machine, or it will leak water .
- Do not use dirty water.
- Do not operate or arrange the machine when the water tank door is open.

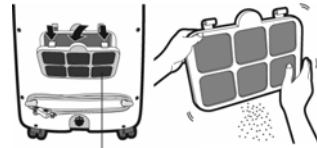


Care and Maintenance

Always disconnect the cord from the electrical outlet when cleaning the unit.

CLEANING OF ACTIVATED CARBON AIR FILER

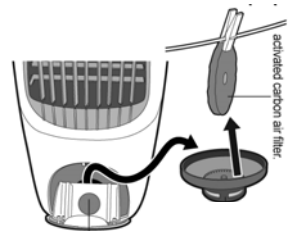
- Remove the filter located at the back of the unit.
- To remove any dust from the filter, lightly tap it against your hand or use a vacuum cleaner with the dusting brush attachment. Place back into position on the back of the unit.



activated carbon air filter.

CLEANING OF ACTIVATED CARBON FILTER

- Remove the water filter container and filter from the bottom of the water tank installation outlet.
- Separate the activated carbon water filter and rinse it out in a container of clean water to clean any dust away. Allow to dry naturally.
- Clean once for every 180 operating hours or once every month.
- Do not operate the air-cooler with the filters removed.



water tank installation outlet

WATER TANK CLEANING

- Remove the water bottle from the installation outlet, inject water into the water tank area and gently rock the unit. Dry the unit naturally.

OUTSIDE CABINET

Wipe the dust and stain on the machine with soft wet cloth. In case of serious stain, you are suggested to clean with neutral detergent. Do not use abrasive products.

Discharge water off and let it completely air dry in a place where there is no direct sunshine and well ventilated. Store the unit in a clean dry place when not in use.



Troubleshooting

Issue	Reason	Solution
The unit does not work	No power supply	Check the unit is plugged in properly, turn the power on and turn the unit on.
There gives off gurgle sound under standard blowing	This sound occurs when using the COOL function without filling the bottle with water.	Turn the COOL mode off so just the fan works OR fill the water bottle with water and continue under COOL mode.
The unit does not seem to perform	Dirty filter.	Clean the filter(s).
	Air inlet or air outlet is blocked.	Remove any blockage.
	Windows/doors not open to create flow through effect	Close windows/doors; remove the heat source if possible.
The buzzer sounds and stops COOL mode	No water in the water bottle	Fill the water bottle.
	It still stops operating with water available.	When temperature is high, the pressure within the container will lead to no water supply. Simply re-install water tank.
Sudden stop or function changes when operating	Any influence by surrounds.	If noise source is not clear, pull the plug out of the socket, then power on again ten seconds later to make sure.
Leaking water	Drainage bolts too loose.	Tighten drainage bolts.
	Machine is inclined	Reduce incline or place on a more stable surface.
	Water being dropped from air outlet	This is not abnormal, may be due to refrigeration process.
The remote control does not function	Distance is too great.	Make sure the remote control is correctly aimed at the control panel.
	Remote control signal not detected by the control panel.	
	The batteries are drained.	Replace the batteries.

Omega Altise products are distributed in Australia by MEA,
 (A Division of Hagemeyer Brands Australia Pty Ltd)
 ABN 28 001 375 686
 Locked Bag 4013, Kingsgrove NSW 2208
 Phone: 1300 739 033
 Fax: 1800 838 899
 Email: customerservice@meappliances.com.au
 Web: meappliances.com.au